
2021

Membership Investment
Information Packet



KILGORE
AREA CHAMBER OF COMMERCE

1108 N. Kilgore Street Kilgore, Texas 75662
903.984.5022 Fax 903.984.4975
E-mail: LMorgan@KilgoreChamber.com
www.KilgoreChamber.com

Welcome

It is with great pleasure that I introduce you to the Kilgore Area Chamber of Commerce. We have included an application along with other information including our benefits package for you to look over. Please take your time in reviewing the materials and write down any questions you may have.



The purpose of the Kilgore Area Chamber of Commerce is to cultivate a strong business and industrial environment in the Kilgore Area, creating a vibrant place to live, learn, work and play.

The Kilgore Area Chamber has joined forces with not only the Kilgore entities of the City of Kilgore, Kilgore ISD, Kilgore Economic Development Corporation and Kilgore College, but we also have great relationships with the Gregg and Rusk County officials and other local Chambers of Commerce, to bring commerce into the area. We understand that in this ever-changing economy it is important to utilize every avenue we can to help sustain a healthy business community.

As we continue into 2021, we are looking for more ways to help bring commerce into the Kilgore, Texas area. Our membership not only covers the Kilgore area as we have members from Longview, Tyler, Carthage, and other areas close by. We have ample opportunity for growth and success. The Kilgore Area Chamber wants to help establish Kilgore, Texas as the place to start or grow a business.

Over 290 businesses in and around Kilgore have found the value of membership in the Kilgore Area Chamber of Commerce. I hope that you will take a few minutes to consider what we can do for you and your business as well as your employees. We want you to experience the benefits your membership will bring to your business.

Benefits available to the Kilgore Area Chamber of Commerce members include:

- Alphabetical and category listing in the Membership Directory and website www.KilgoreChamber.com
- Business Referrals
- Marketing/Advertising options including "Email Blast"
- Monthly membership networking events
- Reduced pricing to chamber events
- Use of our Board room
- Keep It In Kilgore Member to Member Savings Program
- And many more

On behalf of the Board of Directors and the membership, I extend to you an invitation to become a member of the Kilgore Area Chamber of Commerce.

Kindest Regards,

A handwritten signature in blue ink that reads "Jill R. McCartney". A small blue star is positioned above the first letter of the first name.

Jill R. McCartney, IOM CCEO-AP

President & CEO

JMcCartney@KilgoreChamber.com



MEMBERSHIP APPLICATION

General Information

Business Name

Physical Address

City	State	Zip	County
-------------	--------------	------------	---------------

Mailing Address (if different)

City	State	Zip	County
-------------	--------------	------------	---------------

Phone	Fax
--------------	------------

Website	Business Email
----------------	-----------------------

Representatives

Primary Contact	Title	Email
------------------------	--------------	--------------

Billing Contact (if different)	Title	Email
---------------------------------------	--------------	--------------

Additional Contact	Title	Email
---------------------------	--------------	--------------

Additional Contact	Title	Email
---------------------------	--------------	--------------

Business Profile

Category Listing	Total Full-Time Employees	Total Part-Time Employees
-------------------------	----------------------------------	----------------------------------

No. of Rooms	No. of Sq. Ft.	No. of Seats	No. of Units	No. of Beds
---------------------	-----------------------	---------------------	---------------------	--------------------

Brief Explanation of Business (to be placed on Chamber website - 125 words max)

Additional Online Business Directory Listing - \$10 per listing

Additional Contact Information

Facebook Page

Twitter Name

Instagram Name

YouTube

LinkedIn Name

Thank you for providing the following information in order to allow us to better serve you:

1. Is your business Home-Based Minority-Owned Woman-Owned Veteran-Owned

2. Are you a member of other Chambers/Associations? If yes, please list: _____

3. Please indicate your top three (3) reasons for joining in numeric order of priority:

Networking Opportunities

Seminars/Training Programs

Committee Involvement

Economic Development

Member Referrals

Research/Business Information

Events/Functions

Leadership Training

Governmental Representation

Publications/ Mailings

INVESTMENT PAYMENT INFORMATION

\$ _____ + \$25.00 = \$ _____

Amount of Annual Investment

One-Time Processing Fee \$25.00

Total Amount Due

Signature

Referred by

Please make Check Payable to: Kilgore Chamber of Commerce

Please charge my credit card: MasterCard Visa American Express Discover

Card #

Exp. Date

CCV Code

Name on Card

Billing Zip Code

Return to:

Kilgore Area Chamber of Commerce, 1108 N. Kilgore St, Kilgore, TX 75662 or email to lmorgan@kilgorechamber.com

The Membership Investment in the Kilgore Area Chamber of Commerce is non-refundable. Membership investment in the Kilgore Chamber is not deductible as a charitable contribution but may be deducted as an ordinary and necessary business expense.



KILGORE

AREA CHAMBER OF COMMERCE

MEMBER INVESTMENT RATES

Member Investment rate is based on number of employees or capacity of business conducted.

GENERAL BUSINESS

Business and retail investment rates are based upon the number of individuals employed with your company. Two part-time employees equal one full-time employee. The base business investment includes one professional for partnership companies. Partner Affiliation may be purchased for additional exposure of partners (see information under Partner Affiliation).

1-5 Employees	\$225
6-10 Employees	\$250
11-20 Employees	\$285
21-30 Employees	\$360
31-40 Employees	\$425
41-50 Employees	\$480
51+ Employees	\$535

FINANCIAL INSTITUTION, BANK AND CREDIT UNION

\$250 or \$15 per million dollars in local deposits annually/whichever is greater

UTILITY COMPANIES - *Contact the Chamber

PARTNER AFFILIATION (Under existing business partner) - \$120

*The base business investment includes one professional per business schedule. This affiliate category allows an affiliate partnership for each additional professional who would like a separate listing. Investment allows you to include your name after the business or organization affiliation listing (includes attorneys, accounting, financial planners, insurance agents, medical, realtors and other partnership businesses).

COMMUNITY INVESTOR

\$95 (Individual not associated with a business)

*This partnership caters to retirees or other individuals **not** actively employed or own a business operation.

NON-PROFIT ORGANIZATION - \$110 (applies only for civic clubs/churches)

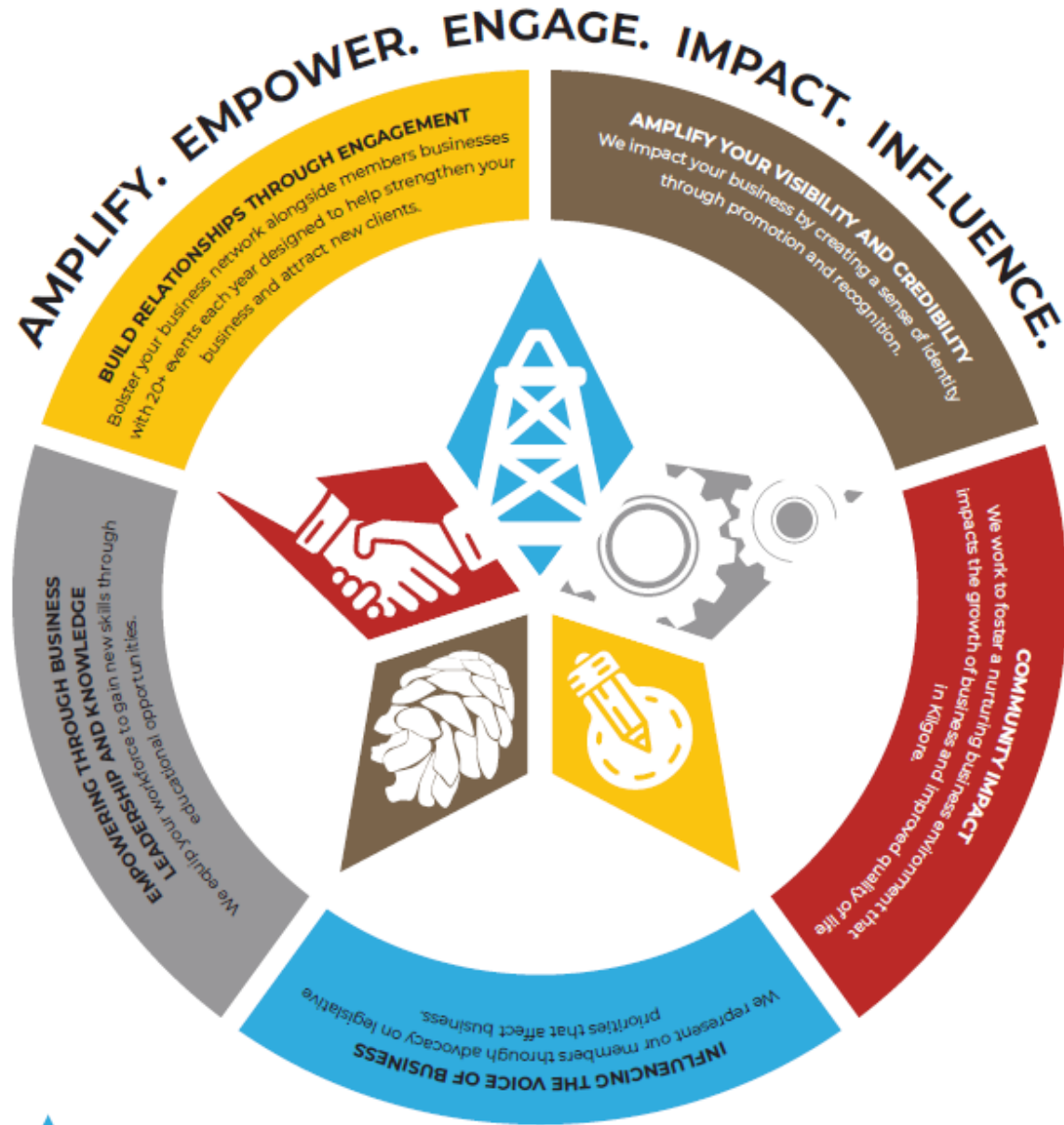


30 *to* AMAZING REASONS to JOIN YOUR LOCAL **CHAMBER OF COMMERCE**

- 1 Look More Trustworthy
- 2 Help Make Important Decisions
- 3 Encourage New Customers with Coupons
- 4 Keep Up to Date on Trends
- 5 Up Awareness of Your Business
- 6 Encourage Consumers to Do Business with You
- 7 Increase the Chances of Customers Purchasing Your Products
- 8 Get Featured
- 9 Promote Your Products Through Other Businesses
- 10 Take a Startup Step
- 11 Gain Mailing List Access
- 12 Form Relationships
- 13 Enjoy Free Publicity
- 14 Gain Industry Leadership Status
- 15 Look Bigger Than You Are
- 16 Integrate Yourself into the Community
- 17 Save on Marketing
- 18 Get a Voice in Government
- 19 Show Consumers You Use Good Business Practices
- 20 Create Charitable Opportunities
- 21 Get the Powerful on Your Side
- 22 Find Out About Volunteer Opportunities
- 23 Cultivate Referrals
- 24 Get the Skinny on the Competition
- 25 Enjoy Low-Cost Continuing Education
- 26 Receive Invitations to Events, Galas and Trade Shows
- 27 Host Events Without Planning Events
- 28 Edge Out the Competition
- 29 Gain Access to Special Discounts
- 30 Increase Your SEO

WHY JOIN THE CHAMBER?

The Kilgore Area Chamber of Commerce is the voice for business and a catalyst organization that ensures Kilgore is a vibrant place to do business, work, live and visit. We're here to serve our members and help you engage, influence and impact your business and the community. **We want to help your business succeed!**



KILGORE
AREA CHAMBER OF COMMERCE

1108 N. Kilgore Street • Kilgore, TX 75662
P: 903-984-5022 • F: 903-984-4975
www.KilgoreChamber.com

9 REASONS TO INVEST IN YOUR CHAMBER

Have you ever recognized you are generally so busy working “in” your business that you’re unable to work “on” your business? We work daily for our Member Investors. Here are nine reasons investing in the Kilgore Area Chamber is not a fruitless burden on time, but rather a value-packed benefit to your business.

The Purpose of the Kilgore Area Chamber of Commerce is to cultivate a strong business and industrial environment in Kilgore, creating a vibrant place to live, learn, work and play.

1. **Amplify Your Visibility & Credibility.** Out of sight, out of mind! You want to remain in the public’s eye, especially when times are good. Business investors can leverage their resources through the Chamber, giving them cutting-edge visibility by standing out from the competition. We impact business by creating a sense of identity through promotion.
2. **Build Relationships through Engagement.** There are endless opportunities to make new business contacts, receive qualified referrals and form partnerships that will help you grow your business. People do not do business with a sign on the outside of a building; they do business with real people. When they need something for business or personal use, they turn to the people they have developed a personal relationship with. Build and strengthen your network through one or all 20 plus events and programs designed to connect you and your business with other businesses.
3. **Making Connections!** The Kilgore Area Chamber of Commerce provides niche programming for your business to make these connections, such as, Morning Brew, BizConnect Luncheon, BizLinx New Business Reception, STAR Gala, Black Gold Texas Tea – Celebrating Women in Business, Capitol Connect and other events and programs.
4. **Access to Business Leaders.** Building relationships is a huge benefit of making an investment in the Chamber. When you invest in the Chamber and get actively involved, you’ll discover the value on your investment through meeting other businesses. You will find yourself in situations where you can identify and meet decision-makers face-to-face.
5. **Business Promotion.** The Kilgore Area Chamber of Commerce offers a wide variety of affordable promotion options and sponsorship packages that fit every businesses budget. Being a sponsor provides your business with additional exposure in a cost-effective way.
6. **Get Noticed!** Let people know you’re in business even if you don’t have time to attend events. Your Chamber investment works for you 24/7 through the online and printed business directories. Chamber investors can utilize the online business directory to further promote their company with new marketing options, including logo, map, and business detail. www.kilgorechamber.com
7. **Training & Personal Development.** The Chamber provides training and personal development programs at affordable prices by spreading the costs among fellow investors. Continuing education for business is important! The Chamber offers seminars/workshops and a leadership training program, E4 Leadership, to advance business development in the workforce. An educated workforce is crucial to your business and our community!
8. **We Are the Voice for Business!** Your business is impacted by decisions made outside the community. We represent the business community’s views on local, state and national issues and legislation. There are numerous opportunities for your involvement, including, the bi-annual Trip to Austin to meet with state legislators and government entities face-to face; and attendance at the Capitol Connect event that brings our state/federal legislators to the table each year to discuss key issues for our community. In addition, the Chamber hosts various Candidate Forums to give voters the opportunity to become better informed about their choices for elected officials during election season. Support us as we represent your company daily on priorities that affect business.
9. **Impact Kilgore’s Economy.** Your business benefits from the Chamber’s work to foster a nurturing business environment. The Chamber works daily to improve our economy by working hand-in-hand with key organizations that impact Kilgore. Strengthening the economy and improving the quality of life are a main focus for the Chamber. Member investors are able to be a part of growing Kilgore by investing in the Chamber and supporting the role of the staff and board in their daily role to build a stronger economy.